

Paris Puzzle Open

13 . 06 . 2026



Fédération Française des  
Jeux Mathématiques

## Round 1 - Back to Basics - 90 minutes

### Instruction Booklet

Puzzle	Points
Tapa 1	15
Tapa 2	55
Spiral Galaxy 1	40
Spiral Galaxy 2	90
Disorderly Loop 1	55
Disorderly Loop 2	20
Statue Park 1	50
Statue Park 2	35
Japanese Sums 1	90
Japanese Sums 2	165
Letter Pairs 1	45
Letter Pairs 2	85
Tatamibari 1	15
Tatamibari 2	40
Oasis 1	20
Oasis 2	40

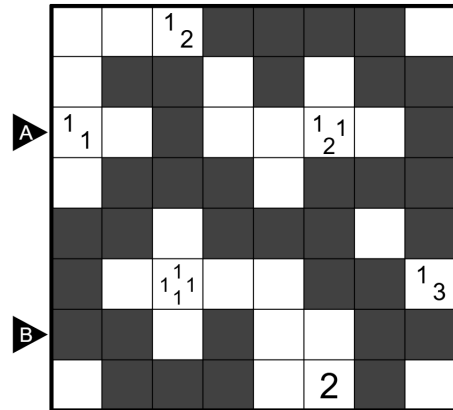
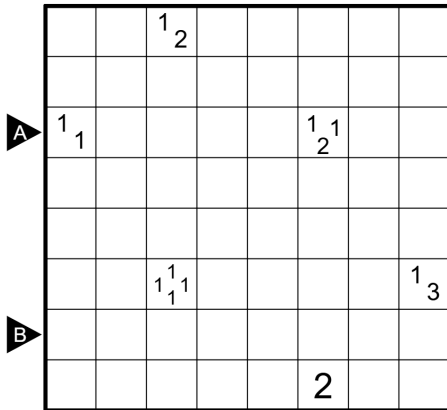
Author : Aubin Danzo

Total : 860 pts

### Tapa (15 & 55 pts)

**Rules** : Shade some cells so that all shaded cells form one orthogonally connected area and no 2x2 region is entirely shaded. Clues cannot be shaded, and represent the lengths of the blocks of consecutive shaded cells in the (up to) eight cells surrounding the clue.

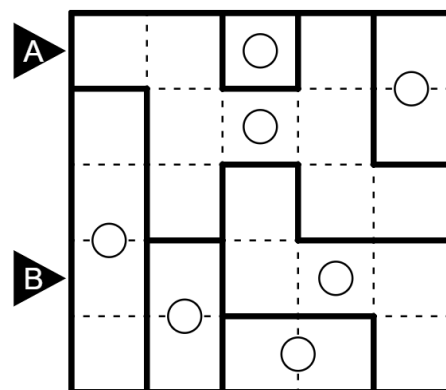
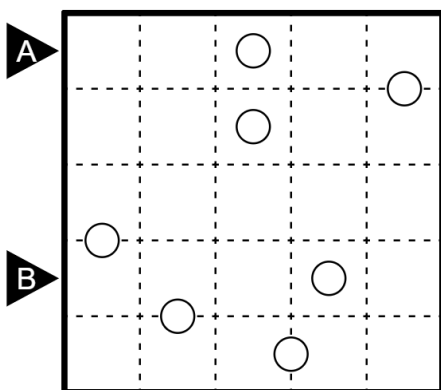
**Solution Code** : Enter the length of the consecutive groups of shaded and unshaded cells from left to right in the direction of the arrows. Ex : 2141,21122



### Spiral Galaxy (40 & 90 pts)

**Rules** : Divide the grid into regions of orthogonally connected cells. Each region must contain exactly one circle and have 180° rotational symmetry around it.

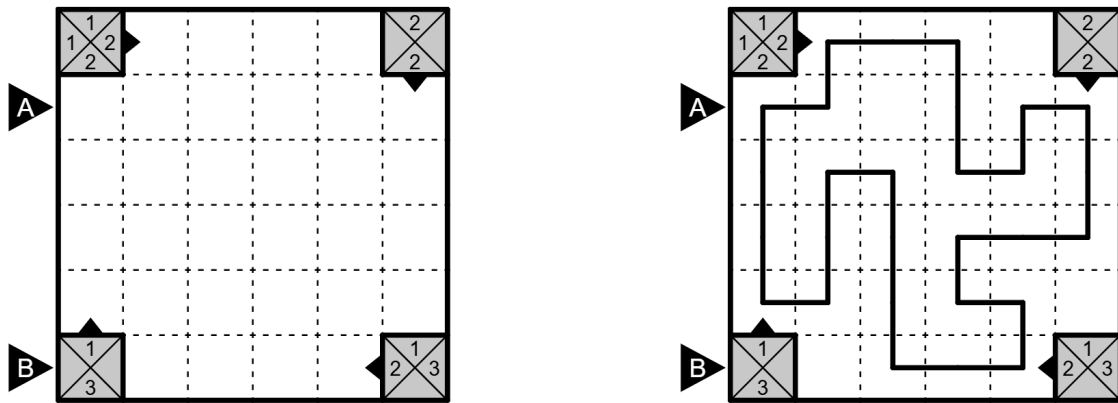
**Solution Code** : Enter the length of each group of cells within the same region from left to right in the direction of the arrows. Ex : 2111,113



### Disorderly Loop (55 & 20 pts)

**Rules** : Draw a non-intersecting loop through the centers of some cells. Clued cells may not be used by the loop. Clues represent the lengths of the next N line segments appearing in the loop, not necessarily in order, starting with a line in the cell adjacent to the clue in the direction of its arrow and moving in the direction of the arrow, where N is the amount of numbers in the clue.

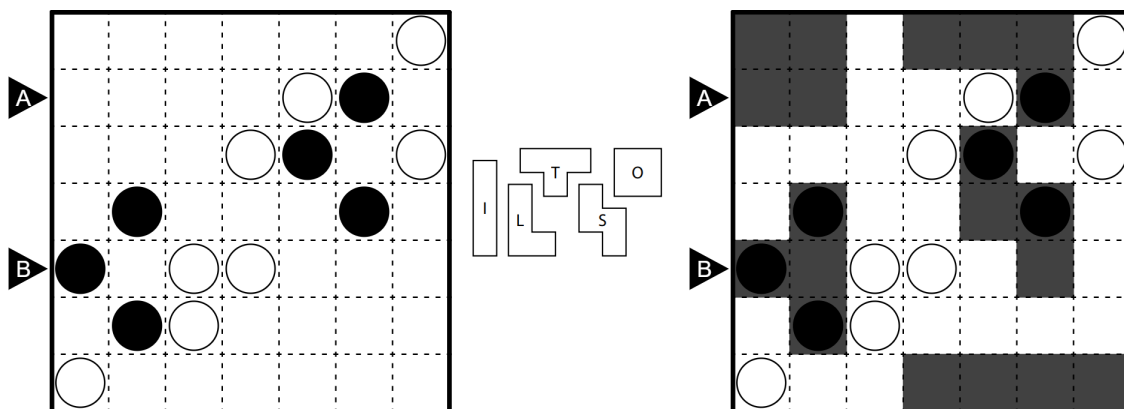
**Solution Code** : Enter the length of each line segment from left to right in the direction of the arrows. Ex : 11,2



### Statue Park (50 & 35 pts)

**Rules** : Place each shape from the bank given outside the grid into the grid so that no two shapes share an edge and all unused cells form one orthogonally connected area. Rotating and reflecting shapes is allowed. Cells with black circles must be used by a shape, and cells with white circles must not be used by a shape.

**Solution Code** : Enter the content of each cell from left to right in the direction of the arrows. Use “-” for an empty cell. Ex : OO- -L-,TT- -S-



### Japanese Sums (90 & 165 pts) :

**Rules** : Place a number from 1 to N (N is given in the top left of the grid) into some cells so that no number is repeated in any row or column. Numbers outside the grid indicate the sums of the numbers in groups of consecutive numbered cells in the corresponding row or column, in order. Sums must be separated by at least one empty cell. A question mark corresponds to any number greater or equal to one.

**Solution Code** : Enter the content of each cell from left to right in the direction of the arrows. Use "-" for an empty cell. Ex : 34-26,5-617

	1-7	3	11	6		1-7	3	11	6	
			13	2	19	1	24			

**A** →

7	8					
	18					
7	?	4				
	10	5				
<b>B</b> →	5	14				

**A** →

7	8	3	4		2	6	
	18		7	5	4	2	
7	?	4	7		1	4	
	10	5	1	2	7	5	
<b>B</b> →	5	14	5		6	1	7

### Letter Pairs (45 & 85 pts) :

**Rules** : Place all given words in the grid (one letter per cell), so they can be read either from left to right or top to bottom. Different words cannot share the same letter. No additional word or letter shall be placed. Clues between two cells represent all instances where two identical letters are adjacent.

**Solution Code** : Enter the content of each cell from left to right in the direction of the arrows. Use "-" for an empty cell. Ex : LLEO,E- - -

	<b>A</b> →	●	●				L	O	L	A
	<b>B</b> →						L	E	A	A
	<b>B</b> →						L	E	O	A
	<b>B</b> →						E	L	I	A

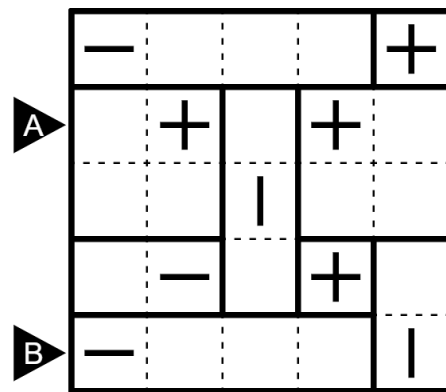
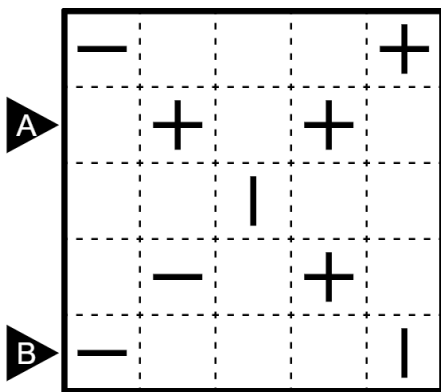
**A** →

L	O	L	A
L	E	A	
E			
A	E	L	I

**Tatamibari (15 & 40 pts) :**

**Rules :** Divide the grid into rectangular regions of orthogonally connected cells, each containing exactly one clue. A plus shaped clue means that the region it belongs to is a square. A line shaped clue means that the region it belongs to is a rectangle with the longer edge parallel to the line. Region borders may not form any four-way intersections.

**Solution Code :** Enter the length of each group of cells within the same region from left to right in the direction of the arrows. Ex : 212,41



**Oasis (20 & 40 pts):**

**Rules :** Shade some cells so that no two shaded cells are orthogonally adjacent and the remaining unshaded cells form one orthogonally connected area. No 2x2 area may be entirely unshaded. Cells with circles cannot be shaded. A number in a circle indicates how many other circles it could reach by traveling only through empty, unshaded cells.

**Solution Code :** Enter the length of the consecutive groups of shaded and unshaded cells from left to right in the direction of the arrows. Ex : 212,11111

